



IPv6 Promotion Council of Japan



Overview of “IPv6 Promotion Council of Japan”

- Name : IPv6 Promotion Council of Japan
- Establishment: In response to “e-Japan priority policy program”, a five year governmental program, the council was established in Oct. 2000 and will operate closely with the program until 2005.
- Chairman : Dr. Jun Murai (Prof. of Keio University)
- Observer : Ministry of Public Management, Home Affairs, Posts and Telecommunications
- Secretariat: Mitsubishi Research Institute, Inc. and Mitsui Knowledge Industry Co., Ltd.
- The members : over 250 (as of March, 2002) members from various categories of business industries
- URL: <http://www.v6pc.jp>

Aims of IPv6 Promotion Council

1. To contribute to the international interests and to show the leadership in IPv6 development and deployment activities
2. To nurture human resources who can develop and sustain an advanced information and telecommunications network society
3. To stimulate emergence of and give support to new business in hardware, software, and service industries associated with networks and terminals

Our Board Members

- n **Academic**
Jun Murai (Keio Univ.), Hiroshi Esaki (The Univ. of Tokyo), Tsukasa Ogino (JPNIC), Osamu Nakamura (Keio Univ.)

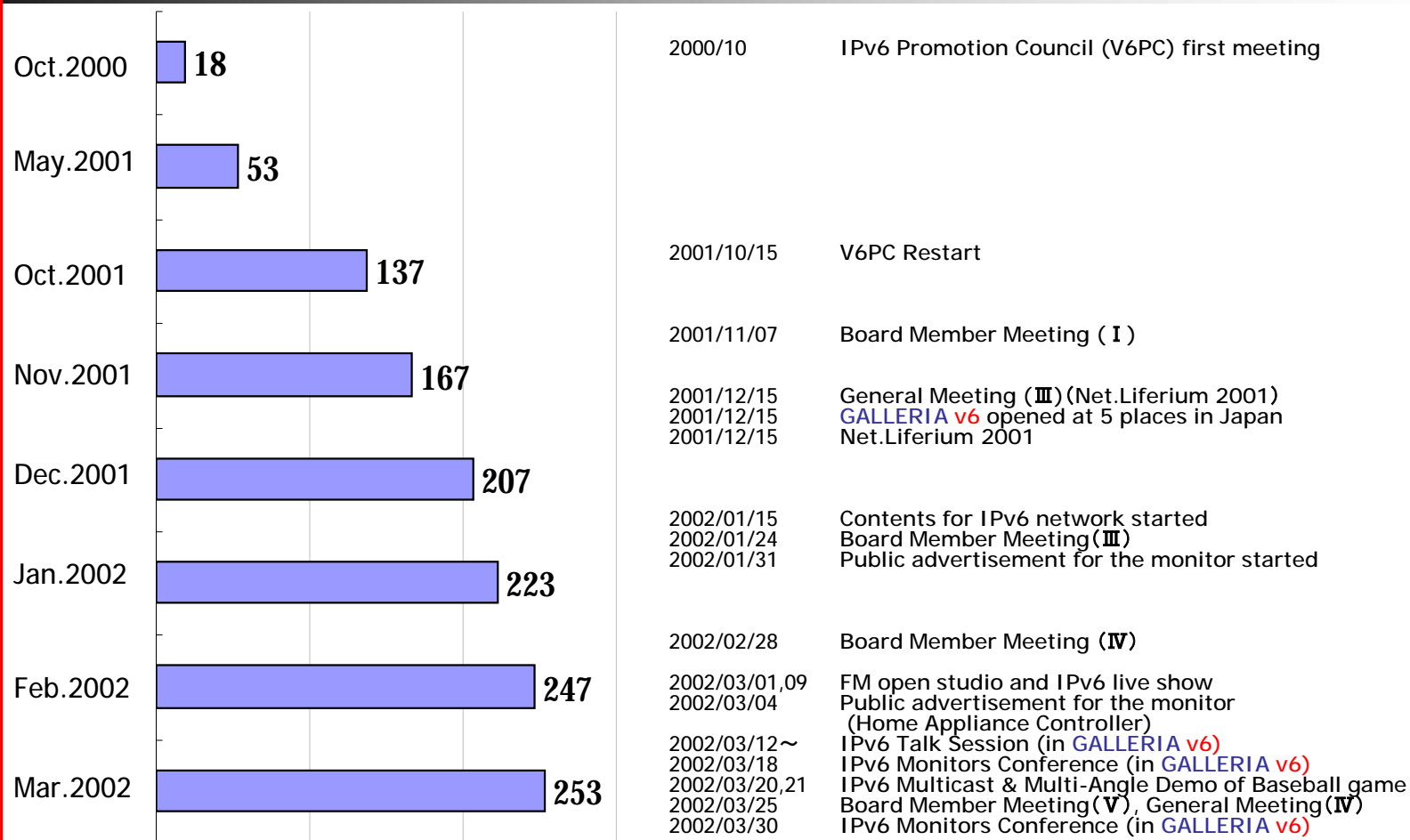
- n **Career**
Japan Telecom Co., Ltd. KDDI Co. NTT Communications Co.

- n **ISP**
Internet Initiative Japan Inc. NIFTY Co.

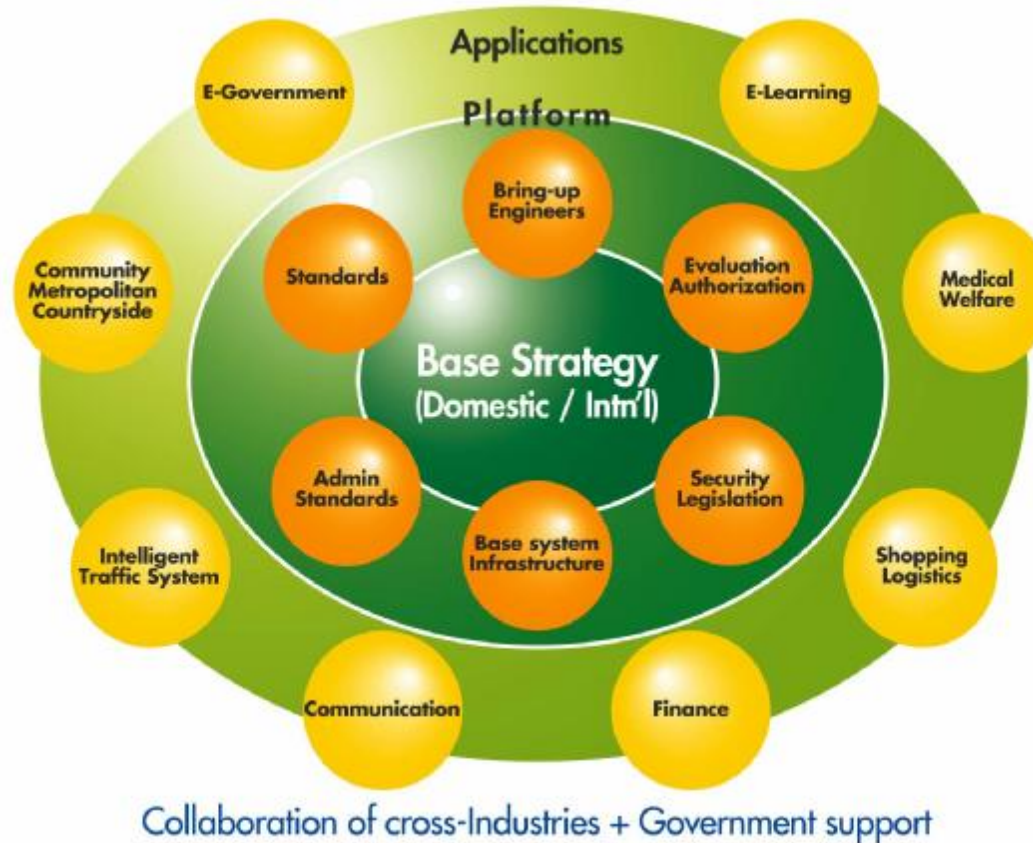
- n **Vender**
Canon Inc. FUJITSU Ltd. Hitachi, Ltd. IBM Japan, Ltd.
Matsushita Electric Industrial Co., Ltd. Microsoft Co., Ltd.
Mitsubishi Electric Co. NEC Co. NOKIA-JAPAN Co., Ltd.
Sony Co. Toshiba Co.

- n **Other**
The Bank of Tokyo Mitsubishi, Ltd. TOYOTA Motor Co.

The Number of Our Members



Scope of IPv6 Promotion Council



Organization



Working Groups

1. Application WG, Network WG (Chair: Dr. Nakamura)
Conducting IPv6 demonstration program in home Appliances
2. Security WG, Certification WG (Chair: Dr. Esaki)
Crisis Management
Security for Home Appliances (authorization), etc
3. International Coordination Strategy WG(Chair: Dr. Murai)
Event coordination/contribution
Network inter-connection collaboration
Inter-Group collaboration (ex: IPv6TF/EU)
4. Base System WG (Chair: Mr. Ogino)
Consolidation of IPv6 deployment
IPv6 Needs Research and IPv4 Lifetime estimation
IPv6 Registry system development
IPv6 Global Address Policy development
5. Train-mobile SG (Chair: Dr. Murai)
Handling the experiment of Internet Connectivity by wireless LAN inside Narita Express (NEX), Train and at Narita International Airport

Activities (1)

1. Establishment and Implementation of basic strategies

Semi-annual evaluation of business trends, as well as the development and evaluation of projects by the Council

Establishment and follow-up on the technical strategies to promote IPv6

Public relations, e.g. setting up showrooms or participating in IPv6 events

Collaboration with related organizations in Japan, as well as involvement in furthering international cooperation, conferences and negotiations

2 .To develop and Implement Address Transfer Strategies

Formulation of strategies to accommodate transfer from IPv4 to IPv6 by preparing proposals of policies to the Government

Operation of “Time-Limited” Large Space IPv4 address usage program for incubating future applications and services for IPv6 generation

3 .Research on Security Technology and Internet Services

Research on the security technology related to IPv6

Examine the mutual-effects between the security technology and Internet services

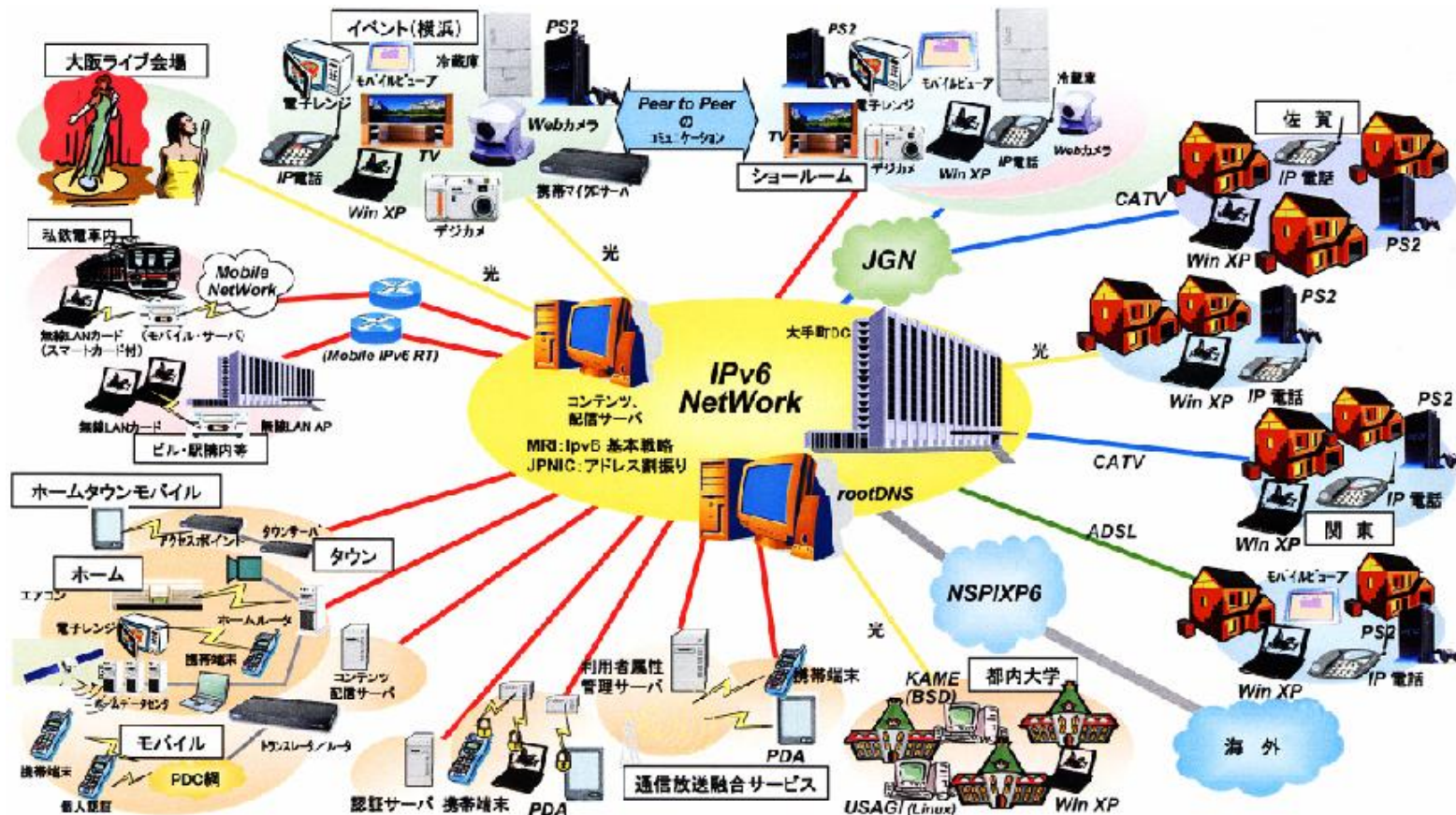
Activities (2)

4. **Support for Development of Applications and Services**
Providing to information among application developers and service providers
Analysis of the needs related to the above, and compilation of a report
5. **Operation Support for Experiment Network**
Support for the IPv6 demonstration experiment by encouraging to participate of corporate and individual Internet users
Evaluation and analysis of the demonstration experiment
6. **Foundation Support for Basic Systems Development**
Support for the development of registry systems, root DNS, and other basic systems
7. **Nurturing Human Resources**
Selected Internet users were given opportunities to take part in an IPv6 experiment to become IPv6 users
8. **Promotion of Associated Council Activities**
Collaborated with neighboring councils where mutual interest toward IPv6 suggested

Achievements

1. IPv6 demonstration program of home internet appliances
About 800 Trial user
2. IPv6 experince showroom (five places nation wide)
Many contents (ex:movies) are available
3. 1st IPv6 internet live concert in history@NetLiferium(internet/ISP event for consumers)
4. Various IPv6 services proposals@NetLiferium
 - (1)Network services model trial
 - (2)Home appliance and services
 - (3)Personal contents exchange trial through home appliance
 - (4)Town-wide mobile network trial
5. Large space IPv4 trial usage program in preparation for future IPv6 deployment
6. Internet Connection through Wireless LAN inside Narita Express (NEX) train and at Narita International Airport
7. Participation in “Global IPv6 Summit in China”

Experimental Network



Applications 1 -IP Phone-

- IP Phone is a type of phone used on the Internet.
- IP Phone can be connected to public network through VoIP gateways



Applications 2

- Internet refrigerators and Internet Microwave Ovens -

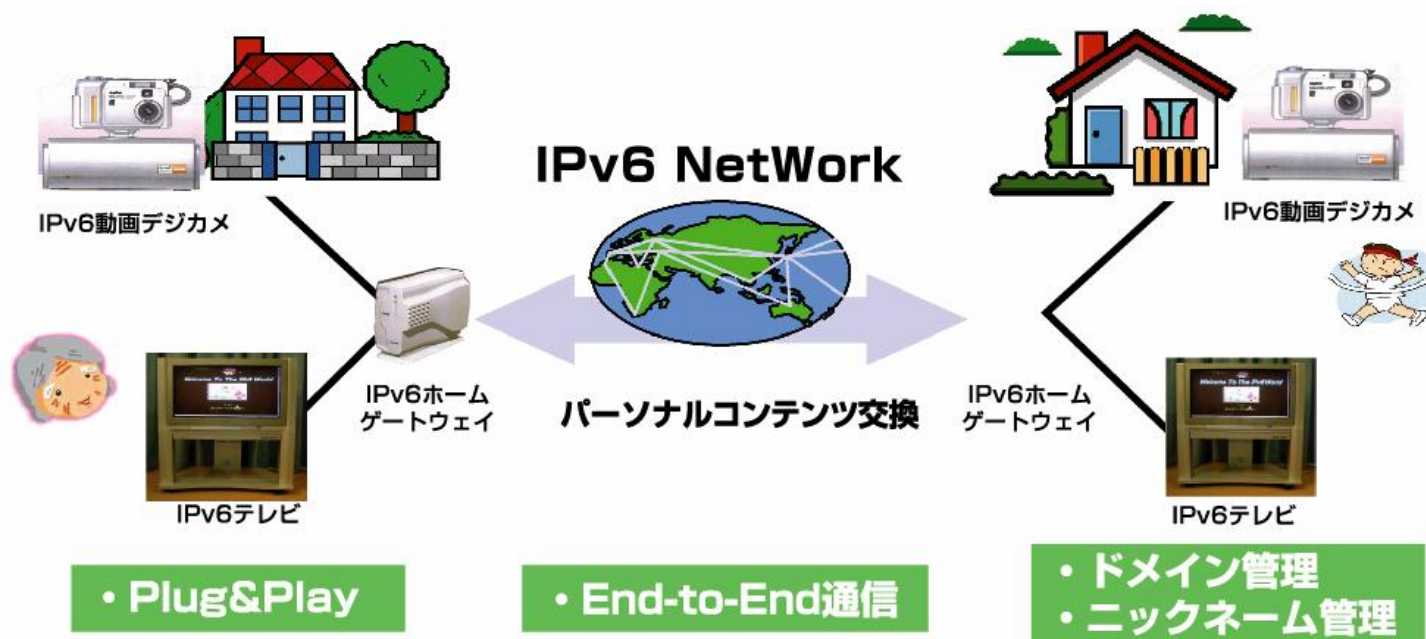
- We can get information about the status in a refrigerator through the Internet.
- User can download recipes through the Internet.
- Refrigerators and Ovens can be use in cooperation by internet technology.



Applications 3

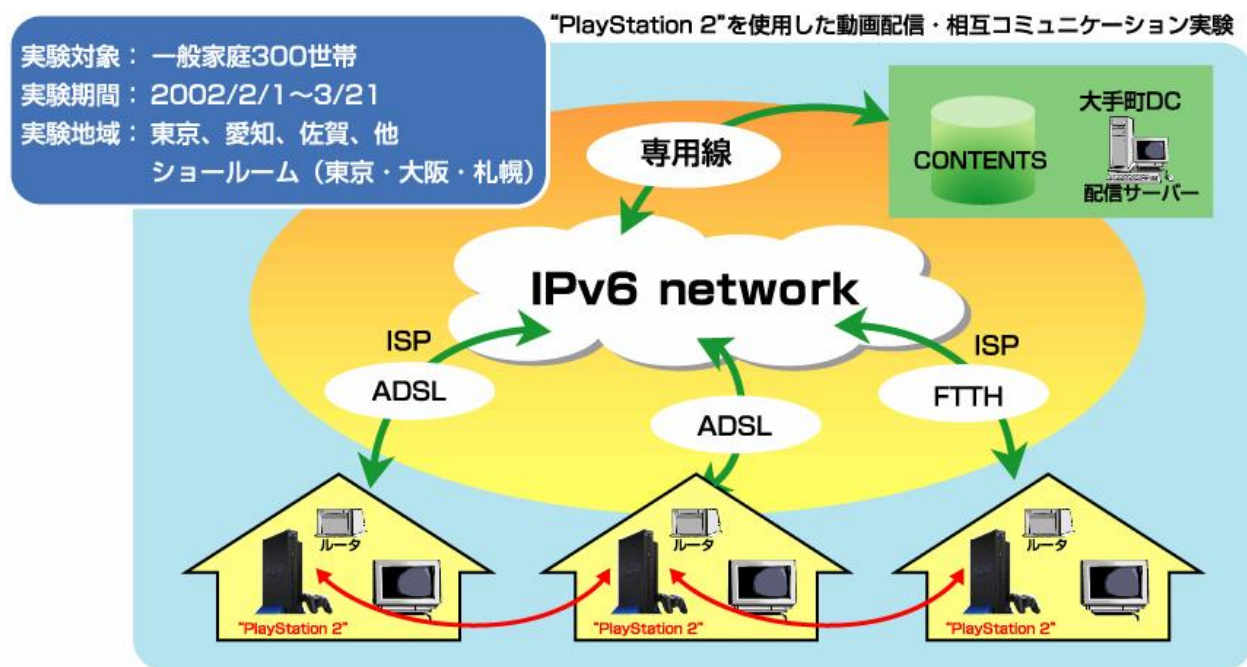
- Digital Cameras and Digital Televisions -

- Users can send pictures and movies to specific terminals through the Internet.
- Users can plug & play these appliances.



Applications 4 - Game Machines -

- In this network, it is possible to stream movies and to communicate between terminals.



Wireless LAN on Trains

(Internet access trial through wireless LAN@Narita Express)

- We are now testing Wireless LAN service inside moving trains.



ODAKYU(TOKYO)



KEIKYU(TOKYO)



NEX(TOKYO)



Show Room “Galleria v6”

GALLERIA v6 Marunouchi

Shin-Marunouchi Bldg. 1st Floor

1-5-1Marunouchi, Chiyoda-ku, Tokyo 100-0005

TEL: 03-3217-0337

Open: Monday - Friday 11:00-19:00

Closed: Saturdays, Sundays and national holidays

Exhibits

- n Internet Refrigerators and Internet microwave ovens (Toshiba Co.)
- n Digital Cinema (Matsushita Electric Co.)
- n IP Phone Handsets and Software (Softfront)
- n Web Camera System and Digital Still Cameras(Canon Inc.)
- n Uploading System for Digital Pictures(Canon Inc.)
- n IPv6 Digital Camera System(Sanyo Co.)
- n Television Conference System(NEC)
- n DV-VOD (Information Services International-DENTSU,LTD.)
- n Wireless LAN System(MIS)
- n Ruff System(TOKYO ELECTRON LTD.)
- n IPv6 Contents(IPv6 Promotion Council of Japan)

Our show rooms are now open at two places nation wide.

Our Exhibits at Global IPv6 Summit in China 1

- n In the booth
 - n We showed “IPv6 Promotion Council of Japan” films and displayed panels that explain Our members’ activities.
 - n Participants enjoyed two video programs, summary of general activities and applications, and home appliances which were from our R&D program.
 - n The mobile phones drew attentions of many participants. How to use them and what were on the display were given focuses.
 - n Many representatives sought the possibilities of physically handling the contents of the video programs.

- n Formal Presentation
 - n We presented eight times in two days.

Our Exhibits at Global IPv6 Summit in China 2

